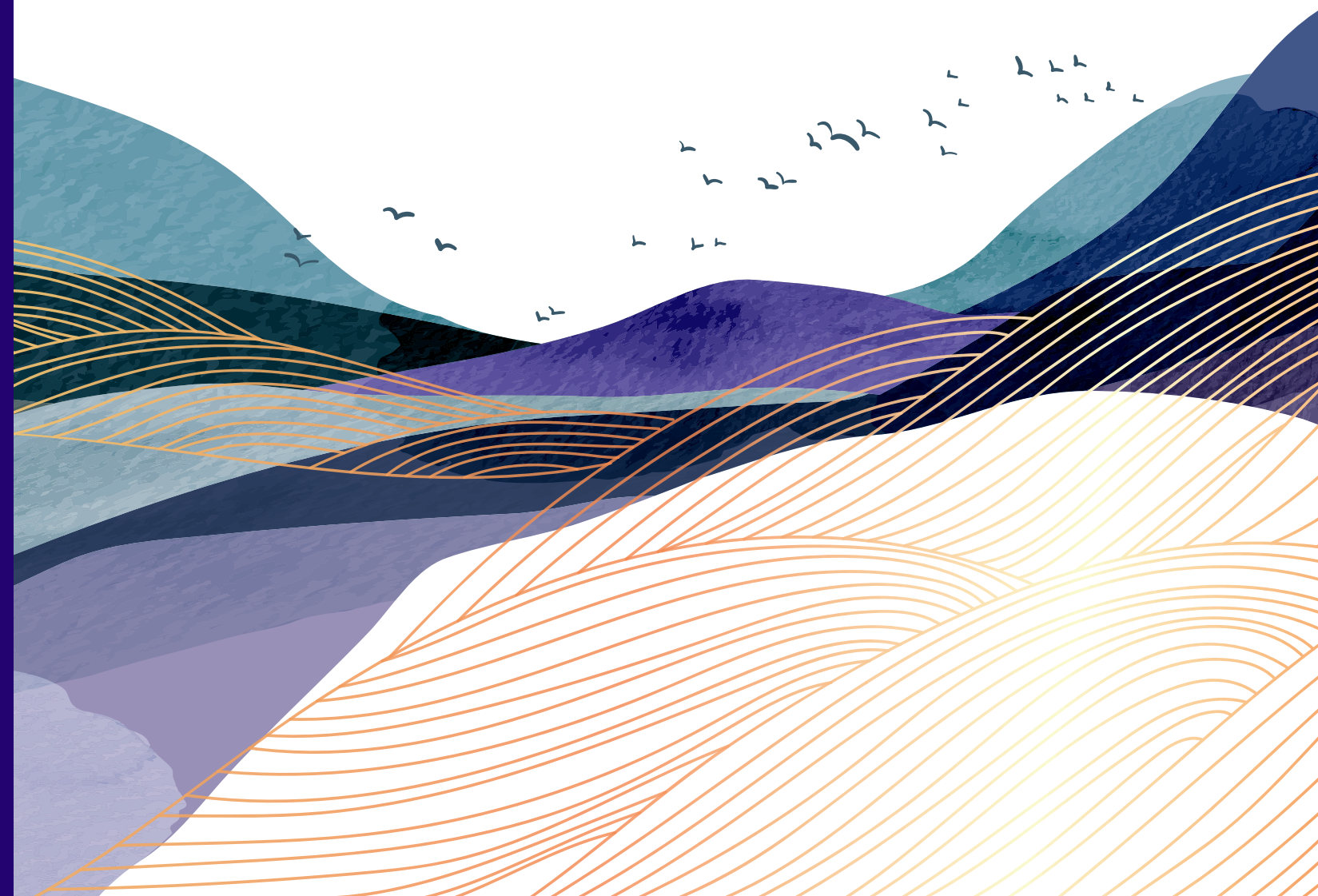


Headwaters

Good health starts here.

Proudly serving the
mid-Willamette Valley
and beyond.



Community Health Impact | 2024



The source of good health

At Salem Health, we believe that good health starts at the headwaters — the source of well-being for individuals, families and communities. Just as clean, strong headwaters nourish an entire ecosystem, a thriving health system serves as the foundation for lifelong well-being: ensuring that care, support and opportunity flow to everyone we serve. Through careful alignment of the funding and resources invested by both Salem Health and the Salem Health Foundations, we ensure that this crucial wellspring of health remains strong and sustainable.

I am pleased to share our efforts to improve the health and well-being of our community across three foundational areas: our patients, our community and our workforce.

As we reflect on the past year’s impact, we remain committed to strengthening these headwaters — because when health begins in the right place, it flows outward, creating a stronger, healthier tomorrow for all.



Cheryl Nester Wolfe
President & CEO, Salem Health Hospitals & Clinics



Our patients

We provide compassionate, high-quality care that prioritizes both treatment and prevention. From expanding access to essential services to advancing innovative care models, we are dedicated to meeting the evolving needs of those we serve.



Our community

We believe that everyone should have a fair and just opportunity to reach their full health potential. We also know that social determinants of health, like food security, housing and safe neighborhoods are just as vital to well-being as clinical care. While Salem Health and its Foundations cannot solve for every need, we can invest in programs that empower our community to achieve long-term solutions that improve health outcomes by addressing social and economic barriers to health.



Our workforce

We believe it is imperative to invest in both our current and future employees and providers to ensure a robust and resilient workforce to meet the challenges of the health care landscape. Through scholarships, educational partnerships, resiliency initiatives and professional development, we ensure that those who care for our communities are equipped, empowered and inspired.

BOARD OF TRUSTEES

John Combes, MD, Board Chair
Ric Linares, Chair Elect

Alan K. Wynn, Treasurer/Secretary
Lane Shetterly, JD, Past Chair

Annette Campista
Jenn Columbus

David Harrison, MD
Theresa Haskins

Phil Jackson
Katherine Keene

Rob Kelly, MD
Angelica Vega, JD

Mark Zook

2024 giving in action

FACT:
8 babies were born every day at Salem Hospital

IMPACT OF GIVING:
Many of these babies' families lacked the resources to provide basic supplies to keep their children healthy. The Salem Health Foundation provided families with **\$30,000** worth of critical items such as thermometers, safe sleep cribs, car seats and diapers.



FACT:
Between our two hospitals, **86** patients were served meals every hour

IMPACT OF GIVING:
Upon discharge from Salem hospital, **600** food-insecure patients received a bag of groceries from our volunteer-led Food Farmacy program.



FACT:
1,862,600 laboratory procedures were performed at Salem Hospital, and **364,250** were performed at West Valley Hospital

IMPACT OF GIVING:
The Community Health Education Center performed **21** regional health screenings, serving **239** people.



FACT:
Salem Hospital had **115,479** emergency department visits, and our urgent care clinics saw **56,317** patients

IMPACT OF GIVING:
Salem Health's Clothing Closet program provided more than **1,400** patients with new, clean clothes to wear home, a **70%** increase over last year.



FACT:
Our primary care clinics had **156,470** patient care visits

IMPACT OF GIVING:
Care providers partnered with the foundation to distribute more than **\$7,400** in transportation support, co-payments, medication and medical supplies to patients in need.



EMPOWERING YOUR HEALTH

Volunteers

447 volunteers
37,000 hours contributed

Community Relations

86 community programs supported financially

Foundation

941 Foundation donors

Community Health Education Center

373 health education programs
21 regional health screenings
138 community events attended
5 support groups with weekly meetings
1,000 patrons of the CHEC library



Community health impact investments

Hospital community benefit and Foundation investments

Salem Health's Mission

To improve the health and well-being of the people and communities we serve.



\$101M



FINANCIAL ASSISTANCE

Free or discounted health care services provided to people who cannot afford to pay



\$711K

DONATIONS

Cash and in-kind donations — grants to support community health needs

\$96K

RESEARCH

Supporting clinical trials and research



COMMUNITY HEALTH IMPROVEMENT

Programs designed to improve community health, including subsidized services and community building activities

\$438K



- YOUR FOUNDATION GIFTS AT WORK
- Continuing education for 700 nurses and staff
 - Cancer resources to 1,408 community members
 - Grant to YMCA for adaptive workout equipment
 - Support to 2,100 vulnerable patients
 - Scholarships to 147 students pursuing health care degrees

HEALTH PROFESSIONAL EDUCATION AND WORKFORCE DEVELOPMENT

Providing clinical experience to students in health care related educational programs



\$7.8M

TOTAL= \$162M*

* Combined hospital community benefit and Foundation dollars invested. For more info on community benefit investments, visit salemhealth.org/about/community/community-benefit-reports.

Health begins at home: Salem Health partners to address housing stability

Partnering with organizations serving vulnerable individuals and families across the region speaks to the heart of Salem Health's mission — to improve the health and well-being of the people and communities it serves. One of the three Community Health Improvement Plan priorities for Marion and Polk counties, housing instability is a contributing factor to poor health outcomes.

Some of the leading causes of housing instability are lack of affordable housing, insufficient support networks, poverty, mental illness, substance abuse and domestic violence. As part of our Community Health Impact work, Salem Health and Salem Health Foundations have invested in several organizations to increase housing stability: St. Joseph Family Shelter, Center for Hope & Safety and Salem for Refugees.

Keeping families together

St. Joseph's provides housing for up to 15 families at a time. It is one of very few shelters in Marion and Polk counties that keeps families together and focuses on what they will need to remain together after leaving the shelter. St. Joseph's provides housing; a food and clothing pantry; financial, relationship and addiction counseling; and other supports to help families create goals that will move them toward stability. They are remarkably successful at preventing children from entering the foster care system and providing tools for long term success.

Helping survivors move forward

Salem Health has a long history of partnership with Center for Hope & Safety (CHS), which provides services for survivors of domestic violence, sexual assault and human trafficking.

Sexual assault nurse examiners, care managers and other Salem Health employees work collaboratively with CHS to care for survivors. Recently, Salem Health partnered with CHS on a project that provides housing, job training opportunities and other services to survivors.



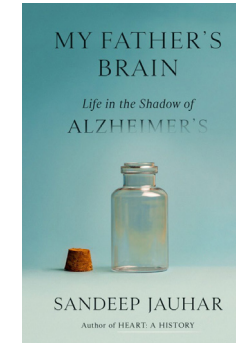
Salem for Refugees helps families settle safely in Salem.

Welcoming new neighbors

As a State Department refugee resettlement agency, Salem for Refugees helps families new to the U.S. transition and become members of our community. Arriving refugees have several core needs, including transitional housing, community building activities, workforce development and English language learning. Temporary host homes provide an immediate safe place for the family to recover from the chaos of travel and trauma that led them to become refugees. Placement in homes rather than hotel rooms has an enormous positive impact on the families. Access to English learning opportunities immediately upon arrival helps families to acclimate more quickly and pursue employment.

Speaker highlights challenges of caring for a loved one with dementia

In June, Sandeep Jauhar, MD, a cardiologist, best-selling author, and NPR and New York Times contributor, joined more than 400 community members in Salem, Dallas and Woodburn to discuss his recent bestselling book, “My Father’s Brain: Life in the Shadow of Alzheimer’s.”



Dr. Jauhar offered a raw, unfiltered perspective on the emotional and practical challenges of caregiving drawn from his own experience witnessing his father’s struggle with Alzheimer’s disease.

Participants were moved by Jauhar’s candor in chronicling his internal turmoil as his father’s mental state deteriorated. Jauhar acknowledged feeling conflicted about lying to his father, unsure as to whether it was better to go along with his delusions or try to confront the painful truth and risk exacerbating his anguish.



Participants learned about other upcoming events at the Community Health Impact booth outside the lecture.



Speaker Sandeep Jauhar, MD, with moderator, Leilani Slama, Chief Communications & Community Relations Officer

Ultimately, he learned that “white lies for mental peace validate the person’s perspective. It is a way of conferring dignity in a way that brutally honest talk may not.” His sharing of this personal struggle resonated with many audience members dealing with similar challenges.

Jauhar’s heartfelt and honest reflections were a helpful roadmap for audience members on this same path.

The Community Health Impact Lecture is a speaker series in which national and local experts discuss health-related topics or issues impacting the health of mid-Willamette Valley residents.

Investing in future care providers



Students participate in the Salem Health skills lab.

“This experience gave me lots of knowledge and helped me understand more of what I want to do with my future.”

Willamette Career Academy delivers career technical training to rural high school students in Marion, Polk and Yamhill counties. Salem Health and Willamette Career Academy are committed to giving students a head start on medical-related careers.

Salem Health delivers core skills and education to high school students so that they can complete their certification as clinical assistants. Students shared a strong interest in learning more about health care careers from Salem Health staff, with some advancing into service-learning opportunities.

During the fall semester, Salem Health hosts students who spend four hours a week for twelve weeks in individual and group shadow opportunities onsite at Salem Hospital. This year, 22 students underwent experiential learning in the emergency department, imaging, adult and pediatric nursing units, rehab and critical care nursing unit and had opportunities to participate hands-on in the Salem Health skills lab.

At the end of the Fall 2024 program, students were surveyed on their experience. One participant shared: “This experience gave me lots of knowledge and helped me understand more of what I want to do with my future.”

Creekside Women's Golf Association

Helping others one putt at a time

For the past 23 years, the Creekside Women’s Golf Association has been dedicated to supporting the Salem Health Foundation through its charity tournaments.

Most recently, the Creekside WGA hosted their annual Golf Fore the Cure Tournament, which raised \$18,000. Since 2001, the group has donated more than \$100,000 to support programs that directly benefit breast cancer patients.

“Cancer has affected us all personally,” explained Carla Bolme, the event chair. “Women in our WGA group, as well as friends and family members, have had the dreaded disease of breast cancer. Some women on our committee are courageous survivors. This compels us to want to help in any way we can.



Golf Fore the Cure Tournament raised \$18,000.

We hope that the proceeds from our tournament can help in some small way to aid in the process of early detection, treatment, or financial assistance when needed, as well as give hope and support to those affected.”

The Salem Health Foundation is grateful to community partners like the Creekside Women’s Golf Association.

FETCH to the rescue

Fido’s Emergency Team for Caring Hospitals (FETCH) gives peace of mind to vulnerable patients with no other means to look after their beloved furry family members while they receive care at Salem Hospital. Knowing their pet is okay helps patients stay for the care they need. FETCH has helped more than 500 pets and people since it began in 2013 — sometimes more than once.

For example, thanks to FETCH, Jim could spend his final moments at Salem Hospital in the paws of Buddy, Cookie and Carmal. FETCH found them new homes after he passed away — a promise the group made to Jim. They also helped keep Lindsey’s dog Lacey safe while she was hospitalized.



Lindsey with her dog, Lacey.

Parkview offers ‘home away from home’ for families of hospital patients

Sarah’s husband, Jim, was admitted to Salem Hospital for a lifesaving surgery followed by a multiple-day stay to ensure his full recovery. They live in Bend, 130 miles away, and the thought of making the nearly three-hour drive daily was overwhelming.

Salem Health Foundation’s Parkview Family Lodge — a warm and welcoming place to stay that’s just steps from the rest of the Salem Hospital campus — is a relief for people like Sarah.

When faced with concerns about a loved one’s health, the added burden of finding affordable accommodation only makes things more stressful for family members.

Parkview Family Lodge offers a home away from home for patients and their families who live at least 50 miles from Salem Hospital and need a place to stay while they or their loved ones receive extended care.

This unique benefit means families like Sarah’s do not have to choose between caring for their loved ones or spending time trying to find a place to stay or commuting long hours. The lodge allows them to be there when needed, providing comfort, peace of mind and a quiet place to relax at the end of a long day.



Parkview Family Lodge

“I want to thank all the workers and volunteers supporting the Parkview Family Lodge. We were a family in crisis, not knowing what the next minutes or hours held for our loved one. You helped relieve and support us so we could focus on caring for our loved one.”

2024 lodge stats

110 patients/families stayed at the lodge

6 average nightly length of stay for patients/families

About the lodge

This five-suite guest house, constructed in 2016 by Kaufman Homes, as a foundation-initiated capital project, sits on the west edge of the Salem Hospital campus, nestled next to large oak trees on Church Street. The house has many comforting amenities, including a large community kitchen, a shared living room, and laundry facilities. It is only a short walk from the main hospital buildings and is adjacent to both Bush and Pringle Parks for easy access to fresh air and quiet reflection.

A health crisis can put many hardships on a family and the Foundation recognizes the importance of a loved one’s support to patient recovery, so there is no cost to stay at Parkview Family Lodge. However, guests often share their appreciation for the hospitality with cards, letters, and gifts to support the program so that others may benefit from it.



Parkview Family Lodge living room and dining area.

“As new parents to twin babies born prematurely — being able to be onsite to bond daily with our children for the past four weeks has meant the world to us. Thank you to the foundation and its many donors for supporting this program!”

Making space to focus on breast cancer care

Our Breast Care Center was established within the Salem Health Cancer Center in August 2019 with the goal of offering world class breast care within the community. Since then, the need for services has grown. The cancer center sees around 400 breast cancer patients per year — it is one of the most common cancer diagnoses treated. The Breast Care Center performs almost half of all breast cancer surgeries in Salem and the surrounding area.

In response to this increasing need, the newly renovated Breast Care Center officially opened October 2024.

Already a nationally accredited breast center, this newly dedicated space allows patients to access comprehensive, state-of-the-art care from diagnosis to survivorship. The team works to meet the many needs our patients face along the way: financial, psychosocial, spiritual, educational and other practical needs in addition to high-quality, multidisciplinary care, information about clinical trials and treatment options. Salem Health Cancer Center is thrilled to offer this new and expanded space to meet the growing needs of our community.



Breast Care Center ribbon cutting ceremony.

Outpatient clinics expand in Dallas

As the health system for our region, Salem Health’s job is to look to the future and assess what health care needs each part of the community will face in the coming decades. That foresight and planning not only led to adding hospital beds at West Valley Hospital in 2023, but also crucial outpatient services.

In March 2024, Salem Health opened new clinic space for wound care, anticoagulation, infusion, medication management and outpatient rehabilitation in Dallas. Salem Health is committed to providing care that is timely, accessible, affordable and — most important — improves the health of Polk County communities.

Foundation event sponsors

- Platinum

Turner Construction
- Gold

Alliant Systems | Andiamo Consulting | K & E Excavating, Inc.
Scott Edwards Architecture | US Bank
- Silver

Oregon Specialty Group | Willamette Valley Bank
- Bronze

C & R Remodeling | Capitol Auto Group | Center Pointe Design & Fabrication
Cherry City Electric | Coldwell Banker Commercial Mountain West Real Estate
Dynalectric Company | Falck | Interior/Exterior Specialist | Jani-King | KPMG
MacDonald-Miller Facility Solutions | MAPS Credit Union | MINET/Willamette Valley Fiber
Morrow Equipment Company, LLC | ODP Solutions, Inc. | Olsen Communities
Pathology Consultants | Pence Contractors | Portland General Electric | SpecialtyCare
Sherman, Sherman, Johnnie, and Holt | Spirit Mountain Gaming, Inc.
State Farm Insurance, Mitch Ratzlaff | Valley Credit Union
Western Oregon University Foundation | Willamette Wealth Advisors



See the complete list of 2024 Foundation donors here

2024 Board of Directors

SALEM HEALTH FOUNDATION	Pat Force, Chair	Steve Altman	Kathy Gordon
	Alex Rhoten, Vice Chair	Garth Brandaw	John Pollino
	Ryan Allbritton, Treasurer/Secretary	Dr. Tim Duenas	Dr. Robert Ponec
	Alex Casebeer, Past Chair	Eric Fiskum	Dr. Nancy Reyes-Molyneux
SALEM HEALTH WEST VALLEY FOUNDATION	Darin Silbernagel, Chair	Amy Houghtaling	Allan Pollock
	John Oberst, Vice Chair	Camille Mercier	Craig Pope
	Eric Olsen, Treasurer/Secretary	Jessie Peters, Ph.D.	Kathy Voves
	Mitch Ratzlaff, Past Chair		