



20
11



Salem Cancer Institute
Affiliated with OHSU Knight Cancer Institute

**You have
a seat at
the table**

For the past 18 months, our cancer program has worked hard to develop a strong relationship with local primary care providers. We realize the importance of communicating and connecting with area providers to facilitate the best cancer care for our patients. Our goal is to provide the highest quality cancer care in Salem and the Mid-Willamette Valley.

Primary care providers always have a seat at the table with our cancer team. In 2011, we:

- Met personally with more than 130 primary care providers (PCPs) representing 34 clinics to discuss local cancer services.
- Received feedback from 25 PCPs participating in an online survey about our local cancer program and services.
- Established a monthly email newsletter for providers to increase communication.



- Planned for an education symposium “Diagnosing Cancer in the Primary Care Practice” which was held in April 2012.
- Began work on a physician directory, diagnostic algorithms and mobile application to guide PCPs through patient work up for cancer.
- Added PCP representation to our Breast Cancer Committee.
- Started a new practice of inviting PCPs to our weekly Cancer Conference.
- Reached more than 3,800 people through our community outreach, education and screening, including bringing world-renowned cancer researcher, Brian Druker, MD, to Salem for a public forum.

We continue to connect with area providers to share this message and gain helpful input on improving our program. Additionally, we are working on building rapport with our patients and the community through focus group interviews, representation on steering committees and enhanced community outreach programs.

Sincerely,

Nancy Boutin, MD
*Medical Director,
Salem Cancer Institute*

Steven Taylor
*Director,
Salem Cancer Institute*

Streamlining the cancer journey

Salem Cancer Institute is with you every step of the way.



Commission on Cancer accreditation

Salem Cancer Institute received full accreditation with commendation from the Commission on Cancer (CoC) in 2011, earning our highest score ever. This reflects the teamwork of 75 dedicated cancer specialists—the Salem Cancer Institute management team, support staff and community physicians—working hard to achieve the best outcomes in the Mid-Willamette Valley.

In 2011, our Cancer Committee ushered in a new era. Under the capable leadership of Eric Laro, MD, we have launched numerous initiatives to comply with the more stringent 2012 CoC standards. In addition, Mark Magilner, MD, has assumed the role of Cancer Liaison physician, supporting the committee with data, analytics and interpretation, and leading the way for improving our cancer program. Our physicians are more engaged than ever, as evidenced by the work of the tumor site committees (see pages 5 and 6).



From left: Eric Laro, MD, Cancer Committee chair; Mark Magilner, MD, Cancer Liaison physician.

Working together for our patients

Our expertly trained surgeons, medical oncologists and radiation oncologists collaborate with other physician diagnosticians to provide advanced and specialized care across a wide spectrum of cancer services.

Surgery

- 16 general surgeons, many with special interest and advanced training in cancer care
- 2 gynecologic oncologists
- 4 neurosurgeons
- 6 otolaryngologists
- 9 urologists, eight of them practicing robotic surgery
- 1 cardiothoracic surgeon, specializing in cancer care
- 4 plastic surgeons

Medical oncology

- 5 medical oncologists, board-certified in internal medicine, hematology and oncology. Three have associate professor appointments at OHSU, where they are involved in teaching and research.

Radiation oncology

- 6 radiation oncologists, covering a full range of cancer specialties that include 3D conformal RT, IMRT, IGRT, Tomo-Therapy, stereotactic procedures (SRS and SBRT), and high dose rate (HDR) brachytherapy.

Diagnosticians

- 11 gastroenterologists
- 8 pathologists
- 12 pulmonologists
- 17 radiologists

Palliative medicine

- 3 palliative care physicians

Exemplary outcomes

The combination of highly-skilled physicians and specialists, comprehensive treatment options, significant volume and advanced technology has made Salem Cancer Institute a leader in treatment outcomes in Oregon and the western United States.

The chart below summarizes key data points from the CoC's National Cancer Data Base. In every key measurement, Salem Cancer Institute performs at levels significantly above the national and statewide average.

Cancer Program Practice Profile Reports <i>Performance Rates, 2009*</i>	Cancer Institute	All CoC-approved programs**
Breast cancer - Select measures		
Radiation therapy is administered within one year of diagnosis for women under age 70 receiving breast-conserving surgery for breast cancer [BCS/RT]	98.9%	86%
Combination chemotherapy is considered or administered within four months of diagnosis for women under age 70 with AJCC T _{1c} N ₀ M ₀ , or Stage II or III ERA and PRA positive breast cancer [HT]	100%	87.2%
Tamoxifen or third-generation aromatase inhibitor is considered or administered within one year of diagnosis for women with AJCC T _{1c} N ₀ M ₀ , or Stage II or III ERA and/or PRA positive breast cancer [HT]	100%	78.9%
Colon cancer - Select measures		
Adjuvant chemotherapy is considered or administered within four months of diagnosis for patients under age 80 with AJCC Stage III (lymph node positive) colon cancer [ACT]	100%	87.8%
At least 12 regional lymph nodes are removed and pathologically examined for resected colon cancer [₁₂ RLN]	89.7%	84.7%
Rectal cancer - Select measures		
Radiation therapy is considered or administered within six months of diagnosis for patients under age 80 with clinical or pathologic AJCC T ₄ N ₀ M ₀ or Stage III receiving surgical resection for rectal cancer [AdjRT]	92.3%	89.5%

*Latest performance data available nationally.

**Rates computed based on data directly reported to the NCDB using specifications endorsed by the National Quality



ATTRACTING TOP SPECIALISTS | *Gynecologic Oncology*

Elizabeth Munro, MD

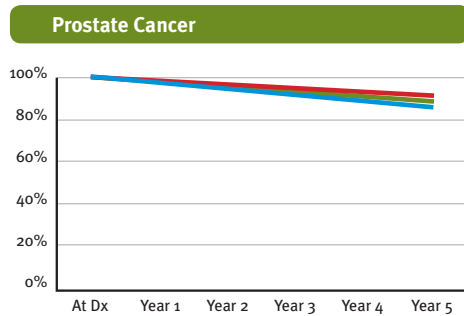
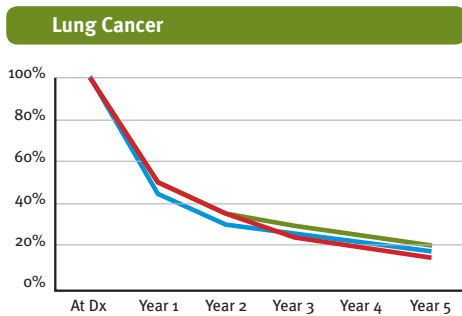
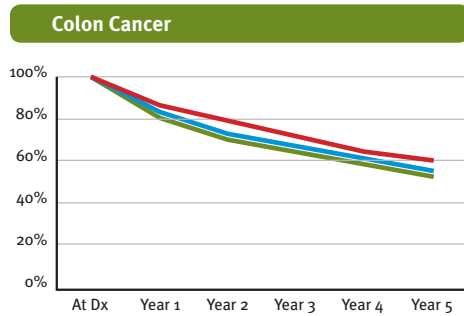
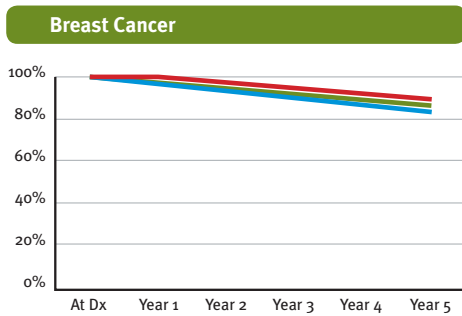
Dr. Munro specializes in gynecologic oncology and advanced surgical options for her patients, including robotic surgery. She received her medical degree from Columbia University, completed her residency at Stanford University and did her fellowship training at Massachusetts General Hospital. Dr. Munro has been instrumental in implementing Salem's gynecologic oncology program in collaboration with OHSU Knight Cancer Institute.



Five-year observed survival rates

The Commission on Cancer (CoC) tracks survival rates by tumor site and cancer stage, compiling data from 563 CoC-approved facilities and 257 teaching/research facilities nationwide. The comprehensive and impartial data gathered for this effort shows survival rates at Salem Cancer Institute to be comparable to or higher than the national average.

Salem Cancer Institute vs. CoC Comprehensive Community Centers and teaching/research facilities



■ Salem Cancer Institute
 ■ CoC Comprehensive Community Centers
 ■ Teaching/research facilities

Tumor site committees: Improving cancer care through collaboration



Breast committee highlights NAPBC Nationally Accredited Breast Center Beth Dayton, MD, Chair Natasha Tiffany, MD, Vice-Chair

- Met 12 times during 2011 with physicians representing the full spectrum of cancer care.
- Revised surgically coordinated procedures order set and provided education to surgeons.
- Revised outpatient procedures order form and disseminated to physician offices.
- Acquired Bioptics specimen X-ray machine for operating room.
- Approved clinical practice guidelines for the treatment of breast cancer.
- Created algorithms to guide PCPs in work up for breast cancer.
- Encouraged and supported Salem Health Imaging as they applied for and received accreditation through the American College of Radiology for stereotactic breast biopsy and ultrasound-guided breast biopsy.



Thoracic committee highlights Everett Mozell, MD, Chair

- Met eight times during 2011 with physicians representing the full spectrum of cancer care.
- Developed lung cancer screening guidelines.
- Reviewed statistical process measures.
- Discussed referral process for esophageal and lung cancers, leading to streamlining and improving care for patients.
- Created algorithms to guide PCPs in work up for lung cancer.
- Researched improving diagnosis, which led to establishing a lung nodule clinic with Salem Pulmonary Associates, PC.
- Acquired navigational bronchoscopy.
- Added stereotactic body radiotherapy (SBRT) to treat difficult lung lesions in radiation oncology.



Gastrointestinal (GI) committee highlights

Robert Ponec, MD, Chair

- Met six times during 2011 with physicians representing the full spectrum of cancer care.
- Initiated genetic counseling patient education brochure.
- Began the groundwork for screening colorectal cancer patients for microsatellite instability.
- Enhanced clinical outcomes.
- Reviewed statistical process measures.
- Suggested Salem Cancer Institute create a directory of cancer specialists.
- Created algorithms to guide PCPs in work up for GI cancers.



Genito-Urinary (GU) committee highlights

Nancy Reyes-Molyneux, MD, Co-Chair

Jaffer Bashey, MD, Co-Chair

- Established committee and selected committee members.
- Met five times during 2011 with physicians representing the full spectrum of cancer care.
- Reviewed national prostate screening guidelines and began discussion to develop guidelines for Salem community.
- Created algorithms to guide PCPs in work up for GU cancers.
- Added RapidArc intensity-modulated radiation therapy (IMRT) as a treatment option for prostate cancer in radiation oncology.



Neurosurgical committee highlights

Maurice Collada, MD, Chair

- Established committee and met six times during 2011.
- Created algorithm to guide PCPs in work up for neurosurgical cancer.
- Added stereotactic radiosurgery (SRS) to treat difficult brain cancers in radiation oncology.
- Quality improvement project to improve timeliness of post-operative MRI's following National Comprehensive Cancer Network Guidelines of one to three days. Project results showed significant improvement:
January - June 2011 = 6 days
July - December 2011 = 2 days

Clinical research

We enhanced our Clinical Research Department in 2011 by hiring new staff, including experienced nurses Diane Snyder and Aimee Orr, and support staff Carolyn Preston. This team works closely with John Strother, MD, the liaison for clinical research between Salem Cancer Institute and OHSU Knight Cancer Institute. A steering committee was established to work in cooperation with OHSU to create ongoing audit procedures and strengthen our affiliation with Southwest Oncology Group, one of the largest cooperative groups for cancer clinical trials in the United States. A variety of treatment and quality of life protocols are available through our medical oncology and radiation oncology partners.



Clinical research team from left: John Strother, MD; Carolyn Preston; Diane Snyder, RN; Aimee Orr, RN.

OHSU Knight Cancer Institute affiliation

A strategic plan was developed as we look toward the future and our continued partnership with OHSU Knight Cancer Institute.

Key planning highlights

- Continue joint education symposiums between physicians in both programs.
- Enhance OHSU Connect and EPIC Everywhere for streamlined patient care and sharing of medical records.
- Establish clinical pathways and joint quality outcomes.
- Streamline regional referral protocols between PCPs, several community hospitals, Salem Hospital and OHSU.
- Enhance medical genetics availability at Salem Hospital.
- Establish a template for cancer screening events.
- Share rotations between Salem and OHSU oncology nurses.



It's Personal Dr. Brian Druker speaks on

DNA and the Future of Cancer Care

Our headline community event in 2011 welcomed internationally renowned cancer researcher and oncologist Brian Druker, MD, to Salem as our keynote speaker. Director of the OHSU Knight Cancer Institute and Jeld-Wen Chair of Leukemia research, Dr. Druker spoke to 273 attendees about the future of cancer care.

Dr. Druker helped revolutionize cancer treatment worldwide when he developed Gleevec®, a breakthrough drug now used to treat seven types of cancer.

This event demonstrated the collaboration between Salem Cancer Institute and OHSU Knight Cancer Institute, and our ongoing commitment to improve cancer care for people across Oregon.

Coordinated care and support services

Cancer nurse navigators are oncology certified nurses, helping patients and families identify needs, solve problems and find resources as they navigate their cancer journey.

Our licensed clinical social worker provides counseling and coping strategies to manage the emotional aspects of cancer diagnosis, treatment and survivorship.

Cancer rehabilitation helps patients cope with treatment-related side effects and includes a cancer exercise specialist and lymphedema specialist who collaborate to create customized programs.

Peer navigator program provides the support and guidance of more than 20 cancer survivors who volunteer to share their experiences with patients and families.

Support groups and education opportunities are available to patients and family members.

Community outreach, education and screening raise awareness and promote early detection.

*Our social worker and team of cancer nurse navigators have more than **600 patient contacts a month.***



From left: Lea Ann Morrow, RN, oncology certified nurse; Wayne Halle, MSW, licensed clinical social worker; Liz Colwell, RN, oncology certified nurse; Kathy Wolfe, RN, certified breast care nurse.

In-hospital care and support services

Integrated inpatient oncology unit includes 16 oncology certified nurses, two hospice and palliative care nurses, and six medical-surgical certified nurses—all dedicated to delivering comprehensive care throughout a patient's stay.

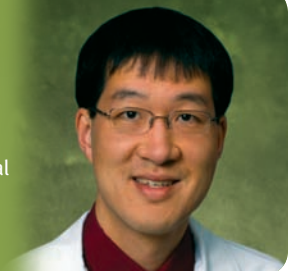
Inpatient palliative care services focus on relief of symptoms, increased comfort and improved quality of life for patients and their families with any life-limiting disease. Our program brings combined expertise from multiple areas to address the physical, emotional and spiritual needs of our patients.

Oncology certified dietitian helps patients in the hospital manage treatment effects through diet and nutrition.

ATTRACTING TOP SPECIALISTS | *Radiation Oncology*

Sam Wang, MD, PhD

Dr. Wang is a radiation oncologist who received his medical degree from Stanford University. He recently joined Salem Radiation Therapy Consultants after completing his residency and serving four years as an assistant professor at OHSU. Dr. Wang has expertise in using external beam radiation, brachytherapy, stereotactic body radiotherapy and stereotactic radiosurgery.





From left: Vickie Wiltsey, certified tumor registrar; Ted Williamson, MD, PhD; Sena Smiley, certified tumor registrar; Leanna Rabb, follow-up clerk; Jacqueline Hartzler, certified tumor registrar; Jodi Phillips, certified tumor registrar.

Salem Cancer Registry: Improving treatments and outcomes since 1960

At Salem Cancer Institute, we are committed to improving the future of cancer care by learning from the past. The Registry, among the oldest in the United States, includes data from 56,000 cases. Registry data allows physicians, researchers and public health professionals to track disease, treatment trends and efficacy.

Data is collected from Salem Cancer Institute, West Valley Hospital, Silverton Hospital, Santiam Hospital and local outpatient facilities. Physicians use Registry information to improve treatment planning, staging and continuity of care.

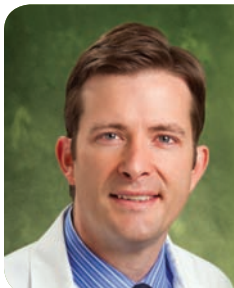
The Registry is the cornerstone of achieving the coveted status of CoC accreditation with commendation from the American College of Surgeons. The Registry also provides data on survival, treatment and extent of disease to the National Cancer Data Base, the CoC and the Oregon State Cancer Registry.

Salem Cancer Institute Cancer Registry

Case Distribution

Primary Site	New Cases* Seen in 2010	New Cases* Seen in 2011	Total # of Cases in Registry 2000-2011
Breast	294	380	4,021
Colorectal	147	129	1,866
Lung	215	228	2,512
Lymphoma/Leukemia	145	119	1,308
Prostate	281	272	3,339
Other/Undefined	710	734	7,423
Total	1,792	1,862	20,469

* New Cases - Total number of new cases seen at Salem Hospital that utilized services - includes all Class of Cases.



ATTRACTING TOP SPECIALISTS | *General Surgery*

Kristopher Dozier, MD

Dr. Dozier received his medical degree from the Medical University of South Carolina and completed his surgical residency at the UC San Francisco East Bay Program. His broad general surgery practice includes a minimally invasive approach. Dr. Dozier practices at Kaiser Permanente's Skyline Surgery Center and joined the Salem Hospital medical staff in 2011. He is board-certified by the American Board of Surgery.

Physicians specializing in cancer care

Our physicians are committed to providing coordinated oncology care for each patient. They work closely with referring providers to ensure the best clinical outcomes. Every physician at Salem Hospital is board-certified or board-eligible and will be certified within five years of initial appointment.

Cardiothoracic

Kai Engstad, MD

Gastroenterology

Richard Brandes, MD
Michael Buck, MD
Makkalearn Em, MD
Lawrence Gates Jr., MD
Katherine Hoda, MD
Patricia Kao, MD
Robert Ponec, MD
Gregory Potter, MD
Edward Schultheiss, MD
Christian Speer, MD
Srinivasan Subramanian, MD

General surgery

Catherine Boulay, MD
Glena Caton, MD
Christine Clarke, MD
G. Andrew Clarke, MD
Beth Dayton, MD
Kristopher Dozier, MD
Jonathan Durning, MD
J. Mark Evans, MD
Ronald Jaecks, MD
Jiyoun (Liz) Kim, MD
Eric Laro, MD
Gloria Marlowe, MD
Everett Mozell, MD
Rajan Nair, MD
Alison Smith, MD
William S. Strauss, MD

Surgeons specializing in lung cancer

Jonathan Durning, MD
Kai Engstad, MD
Eric Laro, MD
Everett Mozell, MD

Gynecologic oncology

Melissa Moffitt, MD
Elizabeth Munro, MD

Medical oncology

Edward Orlowski, MD
Charles Petrunin, MD
William Pierce, MD, PhD
John Strother, MD
Natasha Tiffany, MD

Neurosurgery

Magdalena Banasiak, MD
Maurice Collada, MD
Jerry Hubbard, MD
Julie York, MD

Otolaryngology

Joseph Allan, MD
John Donovan, MD
Bruce Johnson, MD
Gary Nishioka, MD
Douglas Skarada, MD
Clark Thompson, MD

Palliative medicine

Nancy Boutin, MD
Jennifer Neahring, MD
Cynthia Wallace, MD

Pathology

Alicia Kavka, MD
Lawrence Konick, MD
Mark Magilner, MD
Clark McDonald, MD
Pamela Smith, MD
Penny Vanderveer, MD
Daryl Vogel MD, PhD
Debbie Wu, MD

Plastic surgery

Edwin Austin, MD
Bruce Carter, MD
Dann Leonard, MD
William Nisbet, MD

Pulmonary medicine

Fayez Bader, MD
Kamran Firoozi, MD
Saleh Ismail, MD
Martin Johnson, MD
Steven Marvel, MD
Nimeshkumar Mehta, MD
Wenn Jean Ng, MD
James Parosa, MD
Kavan Ramachandran, MD
Kishan Ramachandran, MD
Theodore Shultz, MD
John Silver, MD

Radiation oncology

Matthew Gordon, MD
Arnella Hennig, MD
Matthew Kang, MD
Tasha McDonald, MD
Nancy Reyes-Molyneux, MD
Samuel Wang, MD, PhD

Radiology

John Bradshaw, MD
S. Leon Burrows, MD
Richard Collins, MD
David Farthing, MD
Travis Fromwiller, MD
Michael George, MD
Sidney Green, MD
Michael Hanslits, MD
David Harrison, MD
Ken Hirasaki, MD
Kyu Kim, MD
Jose Novoa, MD
Michael Pass, MD
Jared Sadler, MD
Kathleen Scanlan, MD
Michael Smolin, MD
Sean Stack, MD

Interventional radiology

Michael Hanslits, MD
Ken Hirasaki, MD
Michael Pass, MD
Michael Smolin, MD
Sean Stack, MD

Urology

Jaffer Bashey, MD
Jason Crane, MD
David Elkins, MD
David Elmgren, MD
Timothy Fleming, MD
Anjana Ganeshappa, MD
Alan Hay, MD
Mark Mhoon, MD
Bradley Warner, MD



Salem Hospital Campus, Building C | 875 Oak Street SE | Salem, Oregon 97301
503-562-4321 | TOLL-FREE 877-562-4321 | EMAIL: cancer.institute@salemhealth.org | salemcancercare.org

Salem Cancer Institute is part of Salem Health, which includes Salem Hospital, West Valley Hospital, Willamette Health Partners and other affiliated health care organizations offering quality care to people in and around Oregon's Mid-Willamette Valley.

 **Salem Cancer Institute**
Affiliated with OHSU Knight Cancer Institute